

Figure and table citation (Vancouver style) for thesis book
Department of Epidemiology, Faculty of Medicine, PSU

1. Online figure citation

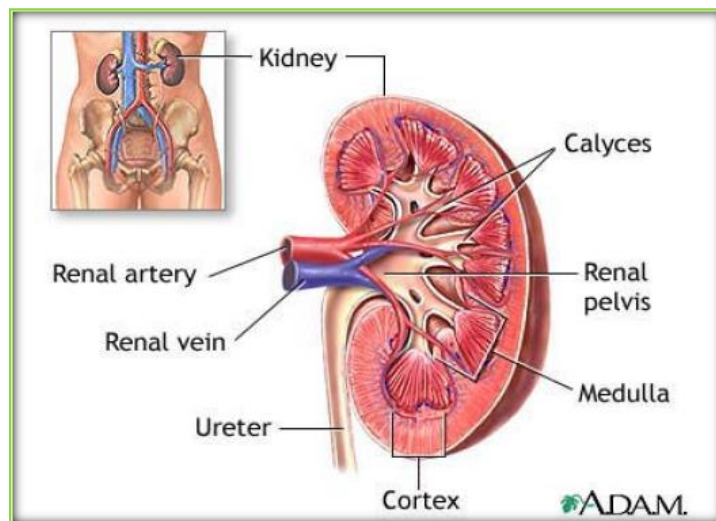


Figure 1. Kidney Anatomy

Available from: http://www.umm.edu/patiented/articles/kidney_anatomy_000159.htm)¹

Reference in the end of thesis

REFERENCE

1. Kidney anatomy [Internet]. 2011 [cited 2013 Mar 12]. Available from: http://www.umm.edu/patiented/articles/kidney_anatomy_000159.htm)

2. Figure from book or journal

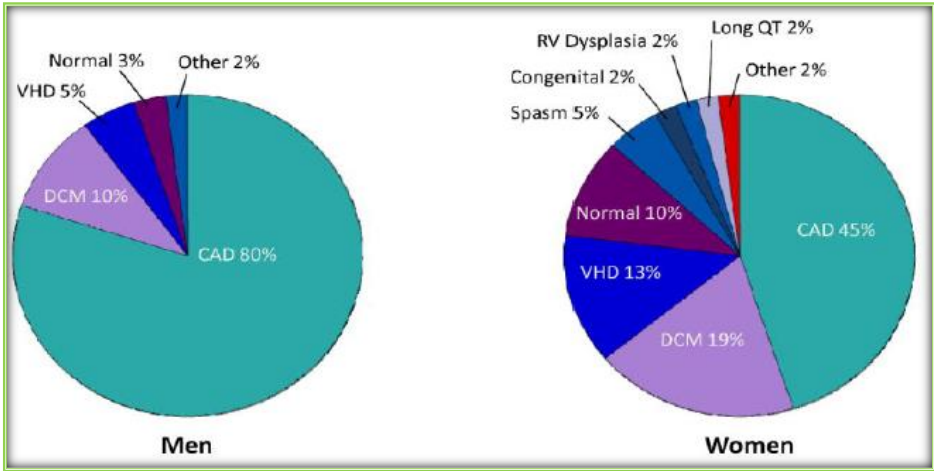


Figure 2. The Graph Show the Sex differences in cardiac arrest survivors from SCA ²

Reference in the end of thesis

REFERENCE

2. Albert CM, McGovern BA, Newell JB, Ruskin JN. Sex differences in cardiac arrest survivors. Circulation 1996; 93: 1170-6

3. Table from Book or Journal

Table 3. Factors at admission associated with bleeding risk in medicals patients: findings from the IMPROVE investigators⁵

Risk Factors	Risk (odds ratio (95 % CI))
1.	4.15 (2.21 -7.11)
2.	3.64 (2.21 -5.99)
3.	3.37 (1.84 –6.18)
4.....	2.96 (1.43-6.15)
5.....	2.18(1.10-4.33)
6.....	2.14 (1.44-3.20)

Reference in the end of thesis

REFERENCE

5. Decousus H, Tapson VF, Bergman JF, Chong BH, Froehlich JB, Kekkar AK, et al. Factors at admission associated with bleeding risk in medical patients: findings from the IMPROVE investigators. Chest 2011; 139:69-79

4. Figure, table citation adapted with permission (Vancouver style)

4.1. FIGURE

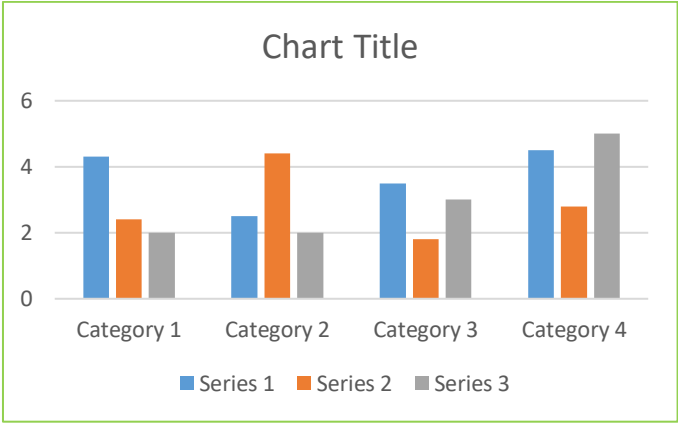


Figure 1. Treatment of Diabetes⁷

Adapted from: Lassen MR, Bauer KA, Eriksson BI. Postoperative fondaparinux versuspreoperative enoxaparin for prevention, Lancet 2002; 359: 1715. Copyright 2007 by Elsevier. Adapted with permission

Used with permission for a single page in this thesis.

Reference in the end of thesis

REFERENCE

⁷ Lassen MR, Bauer KA, Eriksson BI. Postoperative fondaparinux versuspreoperative enoxaparin for prevention, Lancet 2002; 359: 1715. Copyright 2007

2. TABLE

Table 3. Analyses of Prognostic Factors for Overall Survival and Recurrence-free Survival.⁸

Factors	Overall Survival (n = 36)		Recurrence-Free Survival (n = 22)	
	Hazard ratio (95% CI)	P- value ^a	Hazard ratio (95% CI)	P- value ^a
ALK CNG (+) vs. CNG(-)	2.63 (0.86-8.11)	0.076	5.63 (1.11-28.44)	0.037
ER positive vs. negative	0.67 (0.21-2.16)	0.504	0.78 (0.23-2.65)	0.694
HER2 positive vs. negative	0.63 (0.21-1.89)	0.404	0.77 (0.23-2.51)	0.660
AJCC stage IV vs. III	2.74 (0.86-8.73)	0.671		

ALK, anaplastic lymphoma kinase; CNG, copy number gain; AJCC, American Joint Committee on Cancer; ER, estrogen receptor; HER2, human epidermal growth factor receptor 2.

^a *p* values were calculated using the Cox-proportional hazard model.

Adapted from: Kim MH, Lee S, Koo JS, Jung KH, Park IH, et al. Anaplastic lymphoma kinase gene copy number gain in inflammatory breast cancer (IBC): prevalence, clinicopathologic features and prognostic implication. PLoS ONE 2015; 10(3): e0120320. Copyright 2007 by Elsevier. Adapted with permission

Used with permission for a single page in this thesis.

Reference in the end of thesis

REFERENCE

8. Kim MH, Lee S, Koo JS, Jung KH, Park IH, et al. Anaplastic lymphoma kinase gene copy number gain in inflammatory breast cancer (IBC): prevalence, clinicopathologic features and prognostic implication. PLoS ONE 2015; 10(3): e0120320